

Elsie Sutter

To: eksummers@gmail.com
Subject: FW: GREEN ALLEYS PROJECT
Attachments: 20111207134732297.pdf

Dear Mr. Summers:

Attached please find the records responsive to your Freedom of Information Act (5ILCS 140/1 et seq) ('FOIA') request for the following:

"An electronic copy of the application that the Village of Elmwood Park submitted for the Illinois Green Infrastructure Grant Program for Stormwater Management in the summer of 2011. The application is related to the Village of Elmwood Park's "Green Alley Project."

Should you have any questions feel free to contact my office.

Sincerely,
Elsie Sutter
Freedom of Information Officer

-----Original Message-----

From: villagehall@elmwoodpark.org [mailto:villagehall@elmwoodpark.org]
Sent: Wednesday, December 07, 2011 12:48 PM
To: Elsie Sutter
Subject:

This E-mail was sent from "admin3035" (Aficio 3035).

Scan Date: 12.07.2011 13:47:32 (-0500)
Queries to: villagehall@elmwoodpark.org



Village of
Elmwood Park

Peter N. Silvestri
Village President
Elsie Sutter
Village Clerk
John J. Dalicandro
Village Manager
Michael Durkin
Village Attorney

Trustees
Alan L. Bennett
Sam LaBarbera
Carmen P. Forte
Alan T. Kaminski
Diane Kmiecik
Jeff Sargent

December 10, 2010

Amy Walkenbach
Illinois Environmental Protection Agency
Watershed Management Section #15
1021 North Grand Avenue East
Springfield, Illinois 62702

Dear Ms. Walkenbach,

The Village of Elmwood Park thanks you for this chance to apply to the Illinois Green Infrastructure Grant Program. The Village is applying for funds in the amount of \$398,671 for the Green Alleys project under the Combined Sewer Overflow Rehabilitation Category. The proposed project involves constructing two permeable pavement alleys that will help absorb stormwater runoff and reduce the volume of water entering Elmwood Park's combined sewer system.

Elmwood Park has active CSO problems and has taken every opportunity to implement infrastructure improvements that control stormwater runoff, flooding and CSO backups. We are excited about the IEPA's new grant program and hope that we are awarded a grant to implement the Green Alleys project. This initiative is a very important one that will yield measurable results by reducing the amount of stormwater runoff, CSO overflows and pollutants entering the stretch of Des Plaines River that Elmwood Park is located along.

Thank you for considering our application. Please feel free to call me if you have any questions or require more information.

Sincerely,

Peter N. Silvestri
Village President

Illinois Environmental Protection Agency

2010 Illinois Green Infrastructure Grant Program for Stormwater Management

PROPOSAL NARRATIVE

Project: Elmwood Park Green Alleys Project
HUC: 0712000405

Category: Combined Sewer Overflow Rehabilitation

Impaired Waters: Des Plaines River, Segment GL-30

Applicant: Village of Elmwood Park

Applicant Contact: Orion Galey, Village Engineer
Christopher B. Burke Engineering, Ltd.
9575 W. Higgins Road, Suite 600
Rosemont, IL 600187

Telephone: (847) 823-0500

Email: ogaley@cbbel.com

ABSTRACT

The Village of Elmwood Park requests \$398,671.00 in grant funds through the Illinois Green Infrastructure Grant Program (IGIG) to implement the Green Alleys project. The total cost of this project is \$469,025.00. The Village will provide the local match of \$70,354. The proposed project involves reconstructing 2,475 square yards of alley space with Permeable Interlocking Concrete Pavers. These green alleys will significantly increase permeability, enabling 97% of stormwater to infiltrate into the ground. Equally important is the fact that the pavement will filter stormwater runoff and reduce pollutant concentrations.

Elmwood Park is a community with active Combined Sewer Overflow (CSO) problems and has a long term control plan for minimizing the environmental and health risks of CSOs. The Village has also implemented several traditional infrastructure improvements to reduce excess stormwater runoff. However, periods of intense rains combined with the large amounts of impervious land exceed the Village's capacity to limit stormwater flows entering its sewer system. The resulting CSOs contribute to degradation of the nearby Des Plaines River which has been identified as an impaired water body according to the *2010 Illinois Integrated Water Quality Report and Section 303 (d) List*.

The proposed Green Alleys project is the most effective green infrastructure project that the Village can implement to reduce the volumes of stormwater runoff during periods of heavy rains. The completed projects will increase the amount of permeable land, allowing stormwater runoff to infiltrate into the ground, instead of taxing the Village's combined sewer system.

PROJECT NARRATIVE

The Upper Des Plaines River Basin

Elmwood Park is a community of 25,405, bordering the northwest side of the City of Chicago in Cook County. With a total area of about two square miles, the population density is 13,328 people per square mile. Thirty percent of the population is under 25 years of age. The per capita income is \$22,526, and about 5.2% lives below the poverty line. Land within the Village is fully developed with few areas that are open space or park land.

Elmwood Park falls within the Upper Des Plaines River Watershed which drains approximately 346 square miles of land in Illinois. The portion of the Basin spanning Cook County and the far northeast corner of DuPage County is highly developed with some small concentrations of forests and wetlands still remaining along the Des Plaines and its tributaries. The majority of this land is owned by the Forest Preserve Districts. Sixteen distinct habitat types have been identified in the Watershed including forested wetland, emergent wetland, scrub/shrub wetland, and oak savannas. The diversity of flora and fauna in the Watershed is represented by 43 mammal species, 66 species of amphibians, 23 reptiles, and 270 bird species. There are a number of state threatened or endangered species in the Watershed. The diversity of aquatic life including mussels is much lower in the more developed Cook County region in comparison to species found in the waterbodies of Lake County.

Current Challenges and Planning Efforts

Major threats to the Watershed are flooding, hydrologic modification, fragmentation of habitat, and the spread of non-native and invasive species. The Des Plaines River is one of the most flood-prone waterways in the region, with 1 to 2 damaging floods occurring every 10 years since 1930. Hydrologic modifications such as dams built along the river and the conversion of wetlands into farmland have only exacerbated the problem. Historical flooding in 1986 and 1987 caused over \$100 million in damage in communities along the Des Plaines River, including Elmwood Park.

Large areas of impervious land in the developed parts of the Basin are resulting in serious flood conditions during heavy rainfall, leading to significant amounts of polluted runoff that flow into the Watershed's lakes and streams. This is an especially important issue in the developed areas of the Des Plaines River Watershed where many older communities have a combined sewer system. During periods of significant rainfall, these systems reach full capacity and excess flows are discharged into nearby water bodies further impairing water quality.

Numerous water quality and flood control programs have been implemented along the Des Plaines River. In 2000, the Upper Des Plaines River Ecosystem Partnership, comprised of a diverse group of non-profit organizations, businesses, landowners, planning agencies, and government representatives, developed the Watershed Action Restoration Strategy for the Upper Des Plaines River. This strategy details specific actions for improving watershed coordination, flood mitigation, water quality, and natural resources that can be implemented locally and regionally.

Many of these planning efforts aim to reduce combined sewer overflows (CSOs). The Metropolitan Water Reclamation District of Great Chicago (MWRDGC) Tunnel and Reservoir Project (TARP) is currently underway to increase the region's capacity to contain and direct combined sewer flows to water reclamation plants for treatment instead of discharging into rivers and lakes. CSO communities are also implementing long-term control plans and aggressive pollution prevention strategies to minimize pollutant loads entering combined sewer systems.

Project Need

Prioritization of threats

Elmwood Park has a combined sewer system for conveying stormwater and sanitary waste that links to the MWRDGC interceptor sewer. The Village's sewers range from 12 inches to 66 inches in diameter size. Most of these sewers have a very limited capacity to convey stormwater runoff due to their small size and long distances from the MWRDGC interceptor. The interceptor sewer links to the Des Plaines TARP system tunnel which accommodates combined sewer flows until the system reaches capacity during periods of heavy rainfall. Once the TARP tunnel is at maximum capacity, MWRDGC closes the sluices gates to the system and excess flows are diverted into the Des Plaines River.

The CSOs from Elmwood Park's sewer system discharge into segment G-30 of the Des Plaines River which has been assessed as impaired and not supporting aquatic life, fish consumption and primary contact, according to the *2010 Illinois Integrated Water Quality Report and Section 303 (d) List*. Combined sewer overflows and stormwater runoff are major sources of the impairments noted below.

Des Plaines River Segment G-30

| Not Supporting Use | Cause | Source |
|---|--|--|
| Aquatic Life Fish Consumption Primary Contact | Chloride, Dissolved Oxygen, pH, Total Phosphorous, Mercury, Polychlorinated biphenyls, Fecal Coliform | Combined Sewer Overflows, Road runoff, Urban Runoff/ Storm Sewers, Atmospheric Deposition – Toxics |

Elmwood Park has implemented extensive infrastructure improvements to reduce street flooding and reduce the volume of stormwater runoff entering the combined sewer system. These improvements include constructing 5 underground storage facilities into which stormwater runoff from roads is diverted until there is sufficient capacity in the Village's combined sewers to accommodate this volume of water. The five facilities were constructed between 2000 and 2005. The improvements have helped to reduce the frequency and magnitude of flooding and CSOs. However, the capacity of these facilities is exceeded during periods of intense rainfall, as was the case during the June 2009 and July 2010 storm events, which resulted in community-wide flooding and the discharge of overflows into the Des Plaines River. The Village is actively pursuing additional projects that can be implemented to reduce flooding, stormwater runoff and CSOs.

Objective and Anticipated Outcomes

Elmwood Park proposes to implement green infrastructure projects that will significantly enhance the Village's current efforts to minimize the volume of stormwater runoff entering its combined sewer system. The Village will construct two green alleys at two strategic locations that experience particularly severe incidences of flooding during periods of intense rain. The excess runoff in these locations burdens the Village's sewer system leading to flooding, sewer backups and CSOs into the Des Plaines River. The overall objective of the Green Alleys project is to maximize the amount of water infiltrating into the ground and minimize the volume of runoff flowing into the combined sewer system.

A total of 2,475 square yards of alleyway will be reconstructed with Permeable Interlocking Concrete Pavement (PICP). PICP is an extremely effective Best Management Practice (BMP) for increasing infiltration rates of stormwater runoff into the ground and reducing pollutant concentrations. Immediate outcomes achieved as a result of this project will be the reduction of stormwater runoff on the project sites by 97% and as well as pollutant removal efficiencies of 34% for total phosphorous, 67% for nitrogen and 67% for sediment. The project will help reduce the volume of stormwater runoff flowing through the combined sewers, reduce CSOs, and improving the water quality of the Des Plaines River in the long term.

Project Plan

Elmwood Park proposes to utilize IGIG funds for the Green Alleys project and construct two permeable pavement alleys at the following locations:

1. Oakleaf Avenue alley (1,550 square yards)
2. 1700 Block Alley between 76th Avenue-76th Court (925 square yards)

These green alleys will be constructed of Permeable Interlocking Concrete Pavement (PICP) with a Portland Cement Concrete (PCC) Pavement adjacent to the system. The proposed project will include installation of subbase granular material and driveway removal and replacement.

PICP consists of a layer of concrete pavers that are separated by joints filled with small stones. The impervious units are designed with small openings between permeable joints. The openings are typically 5% to 15% of the paver surface area and are filled with highly permeable, small-sized stones. These joints allow stormwater to enter a crushed stone aggregate base layer which provides storage and runoff treatment. PICPs are attractive, durable, easily repaired, and low maintenance. The system significantly reduces rates and volume of stormwater runoff and filters pollutants as the water infiltrates into the ground. The permeable pavement also helps to reduce the urban heat island effect and lowers ambient temperatures.

PICP is a highly effective on-site stormwater management practice, especially for CSO communities. Elmwood Park expects both project sites to help reduce the volume of stormwater entering its combined sewer system. Ninety-seven percent of rain falling onto the green alleys will infiltrate into the ground instead of burdening the combined sewer system. This initiative will also reduce pollutant loads entering the system and ultimately discharging into the Des Plaines River. The Green Alleys project will help improve local water quality in the long term.

The construction of both alleys will take approximately 8 months to complete.

The key project components are:

1. Design/ Engineering Phase: The Village Engineer will prepare the specifications and plans for the construction work for the alleys.
2. Public Bidding: The construction bid notice will be released.
3. Bid Opening/ Contract Awarded: Proposals will be opened and evaluated, and the contract will be awarded to the successful bidder.
4. Construction Phase: Once, the subcontract has been approved by the IEPA, construction of both projects will commence.
5. Project Completion/ Operations and Maintenance Plan

Project Timetable

| Timeline | Project Components/ Tasks | Deliverables | Performance Measures |
|----------------------|---|---|---|
| Months 1-4 | Design/ Engineering; Submission of plans to IEPA for approval | Completed contract plans & specifications | Construction plans approved |
| Month 5-6 | Public Bidding Phase | Construction bid notice released; Bids opened and evaluated | Contract awarded and executed |
| Month 6-7 | Request approval of subcontract by IEPA | Subcontract submitted to IEPA | Subcontract approved |
| Months 7-8 | Construction begins | Both projects completed | Final project report/ documentation closeout |
| Month 8 – Ongoing | Operations and Maintenance Plan | Plan ready to be implemented | Regular maintenance and monitoring activities. |

FINANCIAL INTEGRITY/BUDGET

The total cost for constructing both green alleys is \$469,025.00. Elmwood Park requests \$398,671 (85%) through IGIG to support the projects. The Village will provide the local match of \$70,354 (15%). Although Elmwood Park prefers that both projects be considered for funding, the Village will accept partial funding for the construction of one green alley. The priority for funding is the Oakleaf Avenue alley.

Cost Summary for Both Green Alleys

| Description | Oakleaf Avenue Green Alley | 1700 Block Green Alley | Total |
|-------------------------------|-------------------------------|---------------------------|---------------------|
| Design/ Engineering | \$18,750.00 | \$11,250.00 | \$30,000.00 |
| Construction | \$246,265.62 | \$147,759.38 | \$394,025.00 |
| Construction Oversight | \$28,125.00 | \$16,875.00 | \$45,000.00 |
| Total | \$293,140.62 | \$175,884.38 | \$469,025.00 |
| IGIG Amount (85%) | \$249,169.00 | \$149,502.00 | \$398,671.00 |
| Village of Elmwood Park (15%) | \$43,971.62 | \$26,382.38 | \$70,354.00 |

Project expenses consist of the costs for design/ engineering, construction costs and construction oversight. A detailed cost estimate for construction activities is provided below.

Detailed Construct Cost Estimate – Green Alleys Project

| DESCRIPTION | UNIT | QTY | UNIT PRICE | COST |
|--|-------|------|-------------|----------------------|
| EARTH EXCAVATION | CY | 265 | \$ 35.00 | \$ 9,275.00 |
| REMOVAL AND DISPOSAL OF UNSUITABLE MATERIAL | CY | 310 | \$ 35.00 | \$ 10,850.00 |
| POROUS GRANULAR EMBANKMENT, SUBGRADE | CY | 310 | \$ 30.00 | \$ 9,300.00 |
| TRENCH BACKFILL, SPECIAL | CY | 570 | \$ 35.00 | \$ 19,950.00 |
| SUBBASE GRANULAR MATERIAL TYPE B, 6" | SY | 1545 | \$ 5.00 | \$ 7,725.00 |
| PORTLAND CEMENT CONCRETE PAVEMENT, 8" | SY | 1545 | \$ 45.00 | \$ 69,525.00 |
| PAVEMENT FABRIC (SPECIAL) | SY | 1545 | \$ 5.00 | \$ 7,725.00 |
| PORTLAND CEMENT CONCRETE DRIVEWAY PAVEMENT, 8 INCH | SY | 960 | \$ 40.00 | \$ 38,400.00 |
| PORTLAND CEMENT CONCRETE SIDEWALK, 5 INCH, SPECIAL | SF | 245 | \$ 8.00 | \$ 1,960.00 |
| DRIVEWAY PAVEMENT REMOVAL | SY | 960 | \$ 10.00 | \$ 9,600.00 |
| SIDEWALK REMOVAL | SF | 245 | \$ 1.00 | \$ 245.00 |
| PAVEMENT REMOVAL (SPECIAL) | SY | 2460 | \$ 12.00 | \$ 29,520.00 |
| TRAFFIC CONTROL AND PROTECTION | L.SUM | 1 | \$ 5,000.00 | \$ 5,000.00 |
| AGGREGATE FOR TEMPORARY ACCESS | TON | 105 | \$ 50.00 | \$ 5,250.00 |
| CONSTRUCTION LAYOUT | L.SUM | 1 | \$ 7,500.00 | \$ 7,500.00 |
| HMA DRIVEWAY REPLACEMENT | SY | 20 | \$ 55.00 | \$ 1,100.00 |
| CLASS D PATCHES, 6" (SPECIAL) | SY | 20 | \$ 65.00 | \$ 1,300.00 |
| COMBINATION CURB AND GUTTER REMOVAL & REPLACEMENT (SPECIAL) | FOOT | 60 | \$ 20.00 | \$ 1,200.00 |
| DETECTABLE WARNINGS FOR PEDESTRIAN CROSSINGS, FINISH AND INSTALL | EACH | 4 | \$ 250.00 | \$ 1,000.00 |
| EDGE SLOPE ADJUSTMENT | FOOT | 660 | \$ 15.00 | \$ 9,900.00 |
| MANHOLES, TYPE A, 7'-DIAMETER, TYPE 1 FRAME, CLOSED LID | EACH | 1 | \$ 8,500.00 | \$ 8,500.00 |
| PERMEABLE INTERLOCKING CONCRETE PAVERS | SF | 8600 | \$ 15.00 | \$ 129,000.00 |
| STRUCTURE TO BE ADJUSTED | EACH | 1 | \$ 200.00 | \$ 200.00 |
| TENSAR GEOGRID | SY | 2500 | \$ 4.00 | \$ 10,000.00 |
| Total | | | | \$ 394,025.00 |

Anticipated Outputs and Outcomes

Environmental Outputs

The Village of Elmwood Park will construct two green alleys consisting of 2,475 square yards of permeable interlocking concrete pavers.

Environmental Outcomes:

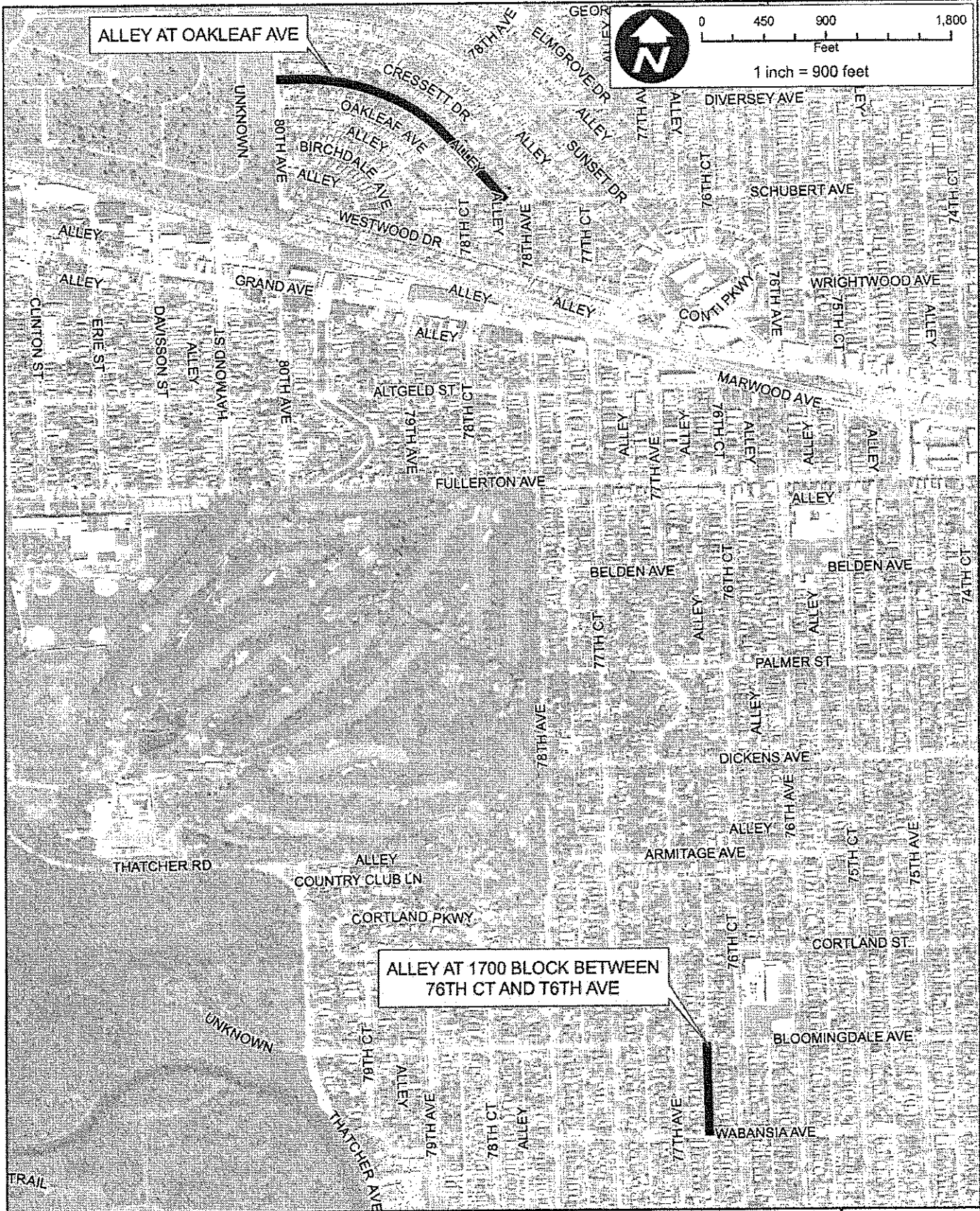
The green alleys will result in:

1. Reducing the volume of surface runoff from the project area by 97%.
2. Reducing the amount of phosphorous entering the Elmwood Park's combined sewer system by 1 lb/year. (Oakleaf Avenue Alley: 1 lb/year; 1700 Block Alley: 0lb/year)
3. Reducing the amount of nitrogen entering the combined sewer system and the Des Plaines River by 6 lbs/year. (Oakleaf Avenue: 4 lbs/year; 1700 Block Alley: 2 lbs/year)
4. Reducing the amount of sediment present in runoff by .591 tons/year (67%). (Oakleaf Avenue Alley: .326 tons/year; 1700 Block Alley: .193 tons/year)

Programmatic Capability/Technical Experience

The Village of Elmwood Park has extensive experience implementing a variety of successful infrastructure projects. The Village has qualified staff with the relevant qualifications to successfully complete the proposed green infrastructure projects. The Village's Public Works Director, Peter Terzo, will oversee both projects and ensure that all project components are implemented according to plan. Elmwood Park's Village Engineer, Orion Galey, will be responsible for the design phase and preparation of construction plans and specifications. Orion is a Professional Civil Engineer with over 7 years of experience in construction and design engineering for roadway, streetscape and utility improvements. His work has included assistance in bidding and contract execution procedures for award of contract, on-site construction observation, documentation of quantities, coordination and/or verification of materials testing and inspection, preparation of record drawings, and finalization of contracts with various agencies.

Elmwood Park has successfully implemented a number of grant-funded improvement projects. Recent grants include an Illinois Transportation Enhancement Program grant for the Belmont Avenue Scenic and Safety Streetscape Project and the Fullerton Avenue LAPP (Local Agency Pavement Preservation) grant.



Map Document: N:\ELMWOOD\PAR\K100588\GIS\Exhibits\Location Map.mxd
 12/8/2010 - 13:39:53

CLIENT:
VILLAGE OF ELMWOOD PARK

TITLE:
LOCATION MAP

PROJ. NO. 10-0588
 DATE: 12-09-2010
 SHEET 1 OF 1
 DRAWING NO.

CB CHRISTOPHER B. BURKE ENGINEERING, LTD.
 9575 W. Higgins Road, Suite 600 - Rosemont, Illinois 60018 - (847) 823-0500

| | | | |
|-------|--|-----------|---------|
| DSGN. | | SCALE: | 1"=900' |
| DWN. | | GIS USER | MHAYES |
| CHKD. | | PLOT DATE | |
| FILE: | | | |

EXH

**Illinois Green Infrastructure Grant Program for Stormwater Management (IGIG)
Attachment 1**

Project Name: Elmwood Park Green Alleys Project
Applicant: Village of Elmwood Park
Date: 15-Nov-10

- Instructions:**
Step 1 - Complete Project Name, Applicant and Date.
Step 2 - Check "Yes", "No" or "NA" (not applicable) on the left side of each criteria listed to identify if the project addresses that consideration.
Step 3 - Provide detailed information, as requested, on the right side. Add lines as necessary.
Step 4 - Submit this form with your IGIG Application to Illinois EPA

| Water Quality | | Detailed Information | |
|---------------|-------|----------------------|--|
| Yes | No NA | Priority | Criteria |
| X | | 1 | High Preserves, restores or enhances the natural hydrology of the area |
| X | | 2 | High Reduces existing impervious surfaces or otherwise increases the effective permeability of existing impervious surfaces at the site or is located on land with permeability reduced due to pre-existing development (e.g., buildings, paved surfaces and compacted soils) |
| X | | 3 | High Reduces pollutant load Total Phosphorus (lbs) = 1 lb/yr (34%) Nitrogen (lbs) = 6 lbs/yr (67%) Sediment (tons) = 0.519 TN/yr (67%) Flow reduction = 97% volume reduction Other (name and amount) = amount reduced |
| X | | 4 | High Significantly reduces the volume of runoff from the site that enters the stormwater collection and conveyance system by increasing infiltration of stormwater into site soils or using vegetation to intercept, take up and evapotranspire stormwater or capturing stormwater for reuse. Reduces volume of stormwater entering a combined sewer system. Eliminates or reduces untreated stormwater runoff. Flow reduction = 97% volume reduction |
| X | | 5 | High Project is within the drainage area of a Section 303(d) identified impaired water, a 305(b) assessed waterbody not meeting full use support or a completed TMDL watershed Name(s) and Assessment Unit IDs of lake and stream: Des Plaines River - 0712000405; IL_G-30 |
| X | | 6 | Med Improves water quality of a local source of drinking water. Site is located within a delineated source water protection area (groundwater) Name(s) of source water: |

**Illinois Green Infrastructure Grant Program for Stormwater Management (IGIG)
Attachment 1**

Implements and is Consistent with Regulations, Permits and Plans

| Yes | No | NA | Priority | Criteria | Detailed Information |
|-----|----|----|----------|---|---|
| X | | | 7 | Identified as a recommended action to improve water quality in a: | Citation: Yes, last updated 2007 |
| | | | High | Approved Long Term Control Plan (CSO Communities) | Yes |
| | | | High | Stormwater Management Plan | Yes |
| | | | High | Stormwater Regulation or Ordinance | Ord. 43-17 |
| | | | High | Regional Water Supply Plan | IDNR Lake Michigan Water Allocation Program |
| | | | High | Watershed Based Plan | Lower Des Plaines River Watershed Mgmt Plan, Cook Co. |
| | | | Med | Local Comprehensive Plan | |
| | | | Low | Conservation Plan | Included in CSO Plan |
| | | | Low | Water Quality Management Plan | Included in CSO Plan |
| X | | | 8 | Directly addresses noncompliance issue, whether or not enforcement action has been taken | |
| X | | | 9 | Integral part of a solution to a Federal Emergency Management Agency (FEMA) documented flood problem | |
| | | | | Documentation: | Not located in floodplain |
| | | | 10 | Reduces consumption of potable, treated water | |
| X | | | 11 | Creates, preserves or restores terrestrial wildlife habitat | |
| X | | | 12 | Creates, preserves or restores recreational open space | |
| X | | | 13 | Reduces heat island effect - Reduction by 10 to 15 degrees Fahrenheit | |
| X | | | 14 | Provides education opportunities (note - education components are not eligible for reimbursement or as match) | |
| X | | | 15 | Generates performance data (note - data collection components are not eligible for reimbursement or as match) | |

Sustainability and Other Policy Priorities

| Yes | No | NA | Priority | Criteria | Detailed Information |
|-----|----|----|----------|---|----------------------|
| X | | | 16 | The community has adopted a dedicated revenue source for green infrastructure stormwater management practices and their long term maintenance | Citation: |
| X | | | 17 | The applicant or its partner have a dedicated source of funds for long term maintenance for the proposed project | |
| X | | | 18 | Uses low impact construction technology to minimize impact on the environment | |
| X | | | 19 | The community has adopted an integrated resource plan, including demand-side management, for water supply, waste water and stormwater. | |

Illinois Green Infrastructure Grant Program for Stormwater Management (IGIG)

PROJECT COST SUMMARY FORM

PART 1 - GENERAL

1. Project Title Elmwood Park Green Alleys Project
 2. Recipient Name Village of Elmwood Park 3. Submittal Date Dec 14, 2010

PART 2 - TOTAL PROJECT COST SUMMARY ASSISTANCE & MATCH

If applicable, attach additional pages to document the budget in more detail.

| 4. Direct Labor (specify labor costs) | Estimated Hours | Hourly Rate | Estimated Costs | |
|--|-----------------|-------------|-----------------|-----------------|
| Professional | | | \$0.00 | |
| Technical | | | \$0.00 | |
| Administrative | | | \$0.00 | |
| | | | \$0.00 | |
| Direct Labor Subtotal | | | \$0.00 | |
| 5. Indirect Costs (specify indirect cost pools) | Rate | Cost Pool | Estimated Costs | |
| | | | | |
| Indirect Costs Subtotal | | | \$0.00 | |
| 6. Other Direct Costs | | | | |
| Equipment / Materials (specify equipment & material costs) | Units | Quantity | Cost / Unit | Estimated Costs |
| | | | | \$0.00 |
| Other Direct Costs Subtotal | | | | |
| Subcontracts (specify subcontract costs) | | | Estimated Costs | |
| Design / Engineering* | | | \$30,000.00 | |
| Permitting | | | | |
| Construction | | | \$394,025.00 | |
| Construction Oversight | | | \$45,000.00 | |
| | | | | |
| Subcontracts Subtotal | | | \$469,025.00 | |
| 7. Other (specify remaining costs) | Units | Quantity | Cost | Total |
| | | | | \$0.00 |
| Other Subtotal | | | | \$0.00 |
| 8. Total (items 4 through 7) | | | | \$469,025.00 |
| 9. IGIG Assistance Amount | | 85% Share | | \$398,671.00 |
| 10. Recipient Share | | 15% Share | | \$70,354.00 |

* Costs for Design / Engineering have a cap. Refer to the IGIG RFP for details.

Sept. 2010 This Agency is authorized to require this information under Illinois Compiled Statutes, 1992, Chapter 415, Section 5/4(k). Disclosure of this information is required. Failure to do so may prevent this form from being processed and could result in your request being denied.

PART 3 - CERTIFICATIONS

Recipient

This proposal is submitted for use in connection with and in response to the Illinois Green Infrastructure Grant Program for Stormwater Management.

This is to certify to the best of my knowledge and belief that the cost and pricing data summarized herein are complete, current, and accurate as of (1) Dec 10, 2010 and that a financial management capability exists to fully and accurately account for the financial transactions under this project.

I further certify that I understand that the subagreement price may be subject to downward re-negotiation and/or recoupment where the above cost and pricing data have been determined, as a result of audit, not to have been complete, current and accurate as of the date above.

(2)

Submittal Date



Signature of Applicant

Applicant Title

ORGANIZATION CERTIFICATIONS AND GRANT CONDITIONS
For ILLINOIS GREEN INFRASTRUCTURE GRANT PROGRAM FOR STORMWATER
MANAGEMENT (IGIG) FINANCIAL ASSISTANCE AGREEMENTS
ILLINOIS ENVIRONMENTAL PROTECTION AGENCY

Section 319(h) grant applicants must certify that the following organization certifications and grant conditions, dated September 15th, 2010, are acceptable and true. A summary of the organization certifications and grant conditions can be found on pages 3 through 17 of this document.

Upon review of this document, complete page 2 and return pages 1 and 2 to:

Illinois Environmental Protection Agency
Bureau of Water, Watershed Management Section
P.O. Box 19276
Springfield, Illinois 62794-9276

List of Organization Certifications:

1. Capability
2. Recipient Share
3. Responsibility of the Recipient
4. Findings Confidential
5. Subcontracts
6. Statutory Certifications
7. Contracting with Small and Minority Firms, Women's Business Enterprise, and Labor Surplus Area Firms
8. More Favorable Terms Clause
9. Violating Facilities
10. Fraud and Other Unlawful or Corrupt Practices
11. Educational Loans & Debt Delinquency
12. Sarbanes-Oxley Act of 2002/Illinois Securities Law of 1953
13. Bid Rigging and Bid Rotating
14. Suspension and Debarment
15. Bribery
16. Drug Free Workplace Certification
17. Privity of Agreement
18. Covenant Against Contingent Fees
19. Compliance with Government-Wide Guidance on Lobbying Restrictions
20. Single Audit Act
21. Audit and Access to Records
22. Indemnity
23. Recycling and Waste Prevention
24. Trafficking Victim Protection Act of 2000
25. Management Fees
26. Hotel-Motel Fire Safety

List of Grant Conditions:

- 27. Supersession
- 28. Right of Illinois EPA to Products of the Agreement
- 29. Appropriation Contingency (Multiyear)
- 30. Liability of the Illinois EPA
- 31. Disputes
- 32. Amendments
- 33. Termination
- 34. Payments

I, the undersigned, being duly authorized to take such actions, have: (i) reviewed the Organization Certifications and Grant Conditions for Clean Water Act Section 319(h) Financial Assistance Agreements; (ii) retained a copy of the Illinois Environmental Protection Agency's ("Illinois EPA") Organization Certifications and Grant Conditions; and (iii) certify that items 1 through 34 of the Illinois EPA's Organization Certifications and Grant Conditions are acceptable and true.



Signature of Authorized Representative

Peter Silvestri

Printed Name

Village President

Title

Signed by (if other than Authorized Representative)

Printed Name

Title

December 13, 2010

Date

This Agency is authorized to require this information under 415 ILCS 5/4(k). Disclosure of this information is required. Failure to do so may prevent this form from being processed and could result in your application being denied.

TAXPAYER IDENTIFICATION NUMBER

I certify that:

1. The number shown on this form is my correct taxpayer identification number (or I am waiting for a number to be issued to me), and
2. I am not subject to backup withholding because: (a) I am exempt from backup withholding, or (b) I have not been notified by the Internal Revenue Service (IRS) that I am subject to backup withholding as a result of a failure to report all interest or dividends, or (c) the IRS has notified me that I am no longer subject to backup withholding, and
3. I am a U.S. person (including a U.S. resident alien).
 - If you are an individual, enter your name and SSN as it appears on your Social Security Card.
 - If you are a sole proprietor, enter the owner's name on the name line followed by the name of the business and the owner's SSN or EIN.
 - If you are a single-member LLC that is disregarded as an entity separate from its owner, enter the owner's name on the name line and the d/b/a on the business name line and enter the owner's SSN or EIN.
 - If the LLC is a corporation or partnership, enter the entity's business name and EIN and for corporations, attach IRS acceptance letter (CP261 or CP277).
 - For all other entities, enter the name of the entity as used to apply for the entity's EIN and the EIN.

Name: _____

Business Name: Village of Elmwood Park, 11 Conti Parkway, Elmwood Park, IL 60635

Taxpayer Identification Number: E9998-1742-05

Social Security Number: _____

or

Employer Identification Number: _____

Legal Status (check one):

- | | |
|---|---|
| <input type="checkbox"/> Individual | <input type="checkbox"/> Corporation providing or billing classification) medical and/or health care services |
| <input type="checkbox"/> Sole Proprietor | <input type="checkbox"/> Corporation NOT providing or billing medical and/or health care services |
| <input type="checkbox"/> Partnership | <input type="checkbox"/> Estate or trust |
| <input type="checkbox"/> Legal Services Corporation | <input type="checkbox"/> Pharmacy (Non-Corp.) |
| <input checked="" type="checkbox"/> Tax-exempt | <input type="checkbox"/> Pharmacy/Funeral Home/Cemetery (Corp.) |
| <input type="checkbox"/> Nonresident alien | <input type="checkbox"/> Limited Liability Company (select applicable tax) |
| <input type="checkbox"/> Governmental | <input type="checkbox"/> D = disregarded entity |
| | <input type="checkbox"/> C = corporation |
| | <input type="checkbox"/> P = partnership |

Signature: _____

Dean N. Silvestri

Date: December 13, 2010